



First section of the wind farm towers on their way through Macarthur.

Macarthur Advancement & Development Association Inc.
Issue N° 155
AUGUST 2011

Riders in the 62nd Cecil Shore Memorial Trophy
Doing the turn around at Macarthur before
heading back to Hamilton.



MEN'S SHED 1ST BIRTHDAY CELEBRATION



Articles and pictures for Mac News
contact Carole Dunn 55761228 or email
cassadunn4@bigpond.com

The next General Meeting of the Macarthur Advancement & Development
Association Inc.
Wednesday 3rd August at 7:00 pm at the **Senior Citizens Clubrooms** Macarthur

M.A.D.A. MATTERS

We have had a busy few months in MADA with the Community Auction and other projects on the go keeping us on our toes. The Auction made a small profit and the committee agreed to donate half of this to the Men's Shed in recognition of the manpower they provided over the two days of the auction. The Men's Shed has agreed to take over the running of the auction and we ask you to give them your full support. It is hoped that proceeds from the auction will provide funds for their ongoing running costs.

Last year we applied for funding on behalf of the Child Care Centre for a shade sail and play equipment for the children. We now have 50% of the amount granted in hand and the shade sail should soon become a reality. At our last meeting we voted to make funding available to the Macarthur Tennis Club to enable them to provide a netball court and run a social competition over the warmer months.

Another project keeping us busy is the provision of a dump point for mobile home and caravan owners to discharge their kitchens and bathroom waste. The provision of a dump point will help make Macarthur a destination for these travelers, not just a town to drive through and we expect local businesses to benefit from the increased tourist traffic.

The 1st batch of applications for funding from the wind farm are currently being assessed by AGL and successful groups will be advised soon. Groups intending to submit applications for the next round should be putting their applications together soon. Please remember to include details of costs, benefit to the community and how you intend to acknowledge the AGL funding.

Last month we held a meeting to discuss a proposal for a Christmas Fair in Macarthur. Invitations were sent to over 30 different clubs and community groups. Unfortunately there was not a very good response. At our next meeting on August 3rd we will be deciding whether we have enough community support to go ahead with the Fair. Local groups need to communicate their support prior to that meeting or we will be unable to proceed.

The construction of the Macarthur Wind Farm has given us an opportunity to revitalize our town but we need more people to be involved. Meetings are held on the 1st Wednesday of the month in the Senior Citizen's Club-rooms at 7pm (changing to 8pm when daylight saving starts). Our AGM will be held on Wednesday 14th September (venue to be advised).

New members are always welcome!



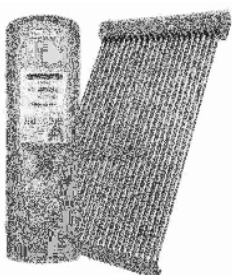
Under 16 footballers in action

PARFREY PLUMBING Pty Ltd

55 High St, Macarthur

Ph: 03 5576 1102

For All Your Solar Hot Water Needs





Broadwater Tennis Club
Port Fairy/Hamilton Road

It's nearly Tennis Season again and the 2010/11 season was a very successful this year. We had two teams in 'B' grade and both in the finals. In the first final the two teams played each other (that was a blow) and orange came out victorious against green by 1 game. The grand final was played against Hawkesdale at Hawkesdale – another close one with us being level on games but going down 5 sets to 4 and receiving one injury! Thankyou to all the players who came to training, played on Saturdays and to those who helped around the club. Our club is successful because of the members who are passionate about playing tennis locally, thankyou. We look forward to seeing both old and new players in October 2011 and doing it all again.

The juniors also had a good season with a round robin and matches played at Broadwater and Hawkesdale alternately. We have a few juniors coming through who have improved so much this year. Our Junior Tennis Coaching Program will continue in the first week of the September holidays, with the Warrnambool Indoor Tennis Centre providing a professional coach for 4 days. Everyone welcome.



ARRIVALS IN STYLE

Andrew Duyvestyn (03) 55 761 217
444 Dairyhill Rd, 0427 101 559
Macarthur, Vic.3286

Horse drawn carriage hire

MAC WEB SERVICE

Need a website for your business or organisation?



We create, configure and maintain **whole web sites**
Right here in Macarthur



(includes organising 'domain registration')

visit the website - **www.macweb.com.au**

PH: (03) 5576 1143 email: info@macweb.com.au
MOB: 0403 917 081 ABN: 92 842 n625 532



Under 12 netball

'Booligal' Country Retreat



- ❖ Bring your horse or pony
- ❖ Boarding kennel for your dog
- ❖ Just 5 kms to Narrawong beach
- ❖ Bush walks in Mt Clay State Forest
- ❖ Small craft groups welcome
- ❖ Ideal for couples and retirees

Ring Sue on **0428 295 340**

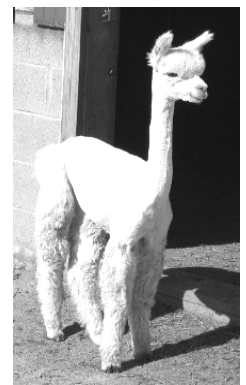
242 Boyers Road
Narrawong 3285
www.booligal.com



ASHLEY HARDY
SHEARER

**Also available for crutching, small jobs
and Alpaca shearing & husbandry.**

Ph: 5576 1060 0428 314 518



HERE AND THERE

HOW DO YOU SEE MACARTHUR??

As another dying town?? Or as a quiet oasis where kids can walk to school safely, where they can start education at Kinder, progress to Primary, and later to their choice of Secondary.

You can take either the Positive view or the Negative view, the choice is yours.

I prefer to be positive, and see advantages in living in a small town with caring, sharing people. Our town has many advantages: starting with well kept street-scape. Good health facilities organised by South West Health Care, and resident Police Station. A full range of sporting facilities, football, netball, cricket, tennis, golf, trapshooting, campdrafting, swimming pool, playground. Cheap housing and abundant vacant land suitable for housing has seen many city dwellers seize an opportunity to enjoy our life-style. Macarthur will never be a home of industry, nor would I want it to become one. However, I believe that our most important feature is our geographical location. Here in the northwest corner of Moyne Shire, Macarthur is within commuting distance of four major employment centres, Hamilton, Portland, Warrnambool, Port Fairy. There was a time when a trip to any of these meant a whole day there and back, but now the map seems to have shrunk and it only takes one hour to reach them.

I estimate there are about 50 people in the 3286 postal area who travel daily to any one of these where jobs in a full range of professions and trades for both men and women can be found. You may think that driving one hour to work is onerous, but thousands of city residents do it every day, fighting traffic bottle necks, road rage, and parking fees.

I am proposing an advertising campaign using 30 second Television clips where the advantages of living in Macarthur can be shown to young families. Such a campaign would cost approx \$11000. I have contacted a group of sixteen Macarthur district residents who have agreed to put in \$200 each to demonstrate our belief in self-help. The primary aim is to get more families in Macarthur.

How do YOU see Macarthur!!

Colin Scott.

News! News! News!

Those of you suffering withdrawal symptoms since the closure of the Byaduk Secondhand Store will be pleased to hear that the store is currently undergoing renovations and will be reopening soon under new ownership.



How many of you found the right spot for the missing ball?????



Just making it around the corner.

e-waste

Analogue TV ceases on May 5!

RECYCLE YOUR OLD

All transfer stations in Moyne Shire accept e-waste

How much does it cost?

Hairdryers

\$2

Laptops

Telephones

Stereos

\$5

Printers

DVD/VHS players

Televisions

\$10

Photocopiers

Microwave

Monitors

NOTE: Fridges and washing machines are not accepted as e-waste, but can be dropped off free as scrap metal.

Waste
REDUCTION
Group



Junior Tennis Coaching

Monday 26th to Thursday 29th
September 2011

(first week of school holidays)

Clinic's will be taken by a Professional Coach from Warrnambool Indoor Tennis Centre and will be held in the morning for four (4) days.

Cost: \$7.00 per child per lesson

Please register with: **Leonie Dyson - 03 5576 4251**

Jodi Fry - 03 5576 4213

Further details closer to the dates.

Broadwater Tennis Courts

Hamilton/Port Fairy Road, Broadwater



Flying high in the A grade netball. Left.

Under 14's

Below



FARRIER

EQUINE

CHIROPRACTOR

DENTISTRY

ALL HORSES & PONIES

PH MICK

0439378450

COWLAND EARTH MOVING

DAMS, ROADS,
DEEP RIPPING,

DRAINAGE,
STONE CLEARING

ROLLING, SAND, SOIL or
GRAVEL.

Brian Cowland

5576 1074

0407 528 608



POLICE NEWS

JULY 2011

RECENT BREAK INS

As reported in the local media there was a series of burglaries in the area which included break ins at the chemist and Pekel wool. Both of these premises were locked but the thieves forced their way in and removed various items. It appears that this occurred in the early hours of the morning and that the thieves were professional in the way they went about it. If you see or hear anything suspicious at any time of the day or night please call 000 and report it. It is also a timely reminder to check that you lock your houses, sheds and vehicles etc before going out or to bed. Don't make it easy for the crooks.

TRUCKS

Many people are concerned at the amount of heavy vehicle traffic on our local roads at the moment and are worried that they may be speeding or driving dangerously. As of this point in time, I have not found one single truck doing the wrong thing as in speeding, cutting corners etc and be assured that if I do it will be dealt with. I know of drivers who have been sacked by the wind farm bosses for alleged bad driving habits and I know that the current drivers value their jobs enough to do the right thing. Please report any bad driving by any vehicle, not just trucks and I will deal with it. Conversely I have had complaints from truck drivers of people pulling out in front of them and not allowing enough room for them to stop. Make sure you look and/or leave plenty of room when pulling out onto a road.

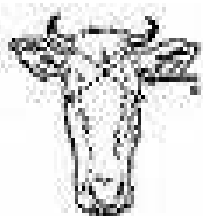


ROADWORTHY VEHICLES

Winter's here and with it comes bad weather and wet roads. Take the time to check your)) tyres, lights, brakes, etc because I will be stopping vehicles for roadworthy checks and you could be liable to a roadworthy notice or a fine if your car is not up to reasonable scratch.

DOGS/ANIMALS

Are still a problem in this area. There are still reports of dogs loose, chasing sheep and cars and if found the owner faces a large fine and possible impoundment of the animal. Legislation also gives authorised officers the power to destroy a dog found chasing animals, on the spot, no questions or liabilities, so lock up your family pets or lose them. There is a large emphasis on wandering stock in the media at the moment so check your fences and gates before your stock cause collisions that you have to pay for!



MCLEOD TRANSPORT

Livestock & General 45' 2 x 1 Stock Crate Trailer 45' Drop Deck Trailer

David McLeod

1127 Condah Road, Macarthur 3286

03 5578 4200 0428 527 264





Macarthur RSL News

The members of the Macarthur RSL have been saddened by the recent loss of May Watson, Roy Fox and Rick Hartney, three highly esteemed members. Our thoughts are with their families.

Our next meeting will be held in the club rooms on Tuesday 9th August 2011 @ 2pm. New members are always welcome.



Under 16's

MACARTHUR HISTORICAL SOCIETY

On **Sunday 14th August** the Macarthur Historical Society is being visited by Peshurst Historical Society.

The Courthouse will be open, along with the Barber's Shop and the RSL rooms.

Everyone is welcome to come along to inspect from 11am – 1pm.

Geoff Sharrock

President.



Seniors

Macarthur Wind Farm Community Support Fund:

AGL and Meridian have finalised the application guidelines and procedure for the Macarthur Wind Farm Community Support Fund, through which \$100,000 will be allocated during the wind farm construction period to benefit local projects in the Macarthur and Hawkesdale districts.

The Macarthur Advancement and Development Association and the Hawkesdale and District Development Action Committee will be involved in the process of assessing and ranking submissions that are relevant to their geographical area. The final decision on successful submissions will be made by a separate Fund Committee that will include AGL, Meridian and Council representatives. There will be three funding rounds as follows:

Round Two: Closing date for applications will be 31st October 2011

Round Three: Closing date for applications will be 30th March 2012

A copy of the Macarthur Wind Farm Community Support Fund guidelines can be obtained from Vicki Askew-Thornton by calling 55 680555, or email vaskewthornton@moyne.vic.gov.au.

Applications are to be forwarded to Vicki Askew-Thornton at Moyne Shire Council, PO Box 51, Port Fairy 3284. In addition to reading a copy of the Fund guidelines, organisations considering making an application are encouraged to contact Greg Walcott, AGL Regional Stakeholder Relations Manager, on 0488 379 077 or at gwalcott@gwconsulting.com.au, to discuss their proposed project.

Design and Digital Photography Classes

Hamilton Campus



Explore and Apply Creative Design Processes

Saturdays commencing Saturday 23rd July
9.30am – 12.30pm for 16 weeks
(excluding school holidays)

Explore the elements and principles of design through a series of concept ideas using a range different 2D materials, tools and equipment.

Materials will include watercolour, gouache, acrylic, oil painting, collage techniques, felt tip pens, pen and ink (make your own quill with bamboo), grey lead, coloured pencil, pastel, charcoal (make your own charcoal from willow branches). Beginners to advanced students welcome.

Produce Digital Images

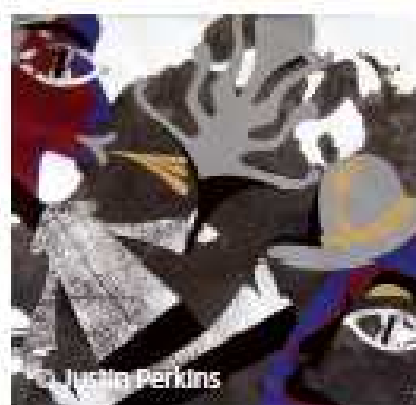
Mondays commencing 18th July
6.00pm – 9.00pm for 16 weeks
(excluding school holidays)

This course will teach you how to use a digital camera effectively, so you can produce great images when it really counts.

A variety of photographic subject matters will be explored, including the skills and knowledge required to produce high quality images. This course focuses on basic images and portraits for the amateur enthusiast. Students will be introduced to relevant Photoshop techniques.

For more information

Contact the Customer Service Centre on 1300 648 911 or email info@swtafe.vic.edu.au



1300 648 911 | www.swtafe.vic.edu.au

Life Drawing Evening Classes

Portland Campus



A great opportunity to draw from life and gain a qualification at the same time!

This unit explores ways of looking at and imaging the human body. It aims to give you the skills to confidently draw from a model.

Measurement, proportion, shape and rendering form using line and tone will be covered. Building on this basis, you will also be given the opportunity to learn how to apply your drawing skills to other mediums.

Beginners to advanced students welcome.

Course Dates

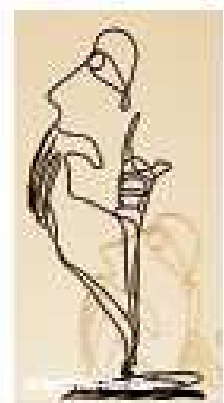
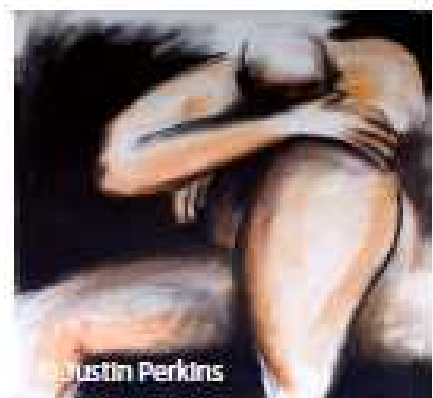
Tuesdays, 6pm-10pm for 12 weeks commencing Tuesday 19th July (excluding school holidays)

Course Costs

Program costs will vary as concessions will apply to eligible students. Individual costs will be provided upon enquiry or application.

For more information

Contact the Customer Service Centre on 1 300 648 911 or email info@swtafe.vic.edu.au



1300 648 911 | www.swtafe.vic.edu.au

Keating's Pharmacy

2 Market St, Macarthur Vic 3286

Spilios Koliou & Partners

Ph: 55761001

Open Mon Tue Thu Fri 11 am to 5 pm

Wed open till 5.30pm

Lunch from 1 pm to 2 pm.

Closed Public Holidays.

Heywood Pharmacy Ph: 55271683



**Great
Specials
every
Month**



SPECIALS – LAST 2 WEEKS OF THE MONTH - GREAT NEW STOCK
GIFT WARE - NEW BABY GIFTS
A WARM SCARF OR GLOVES
SOCKS - 3 PAIR FOR \$10.00
DIFFUSERS – DUSTING POWDERS
TALCUM POWDER

**DRY CLEANING
SERVICE**



LACHLAN & WALLACE HILL

AGRICULTURAL CONTRACTORS

Lachlan: 0418 761113

Wallace: 0419 591971



SPECIALISING IN:

- ◆ Hay Baling
- ◆ Air Seeder
- ◆ Mouldboard Ploughing
- ◆ Power Harrow
- ◆ Mowing
- ◆ Offset Disc Ploughing
- ◆ Land Plane
- ◆ Raking
- ◆ Disc Ploughing
- ◆ Track Formation
- ◆ Field Span
- ◆ Draining.



BOOKKEEPING

Quarterly, monthly or casual support for:

- Quicken
- Quickbooks
- MYOB
- Banklink
- Agrimaster
- BAS & IAS
- Payroll & Super



*Time to turn over a new page ...
A good accountant will save you \$\$\$*



We're not about corporate fees or a corporate image ... we're here for YOU ... with the latest rulings, knowledge and expertise to gain you the greatest returns, deductions and entitlements.

We are a highly qualified 10 strong team that regularly attend conferences to assure our advice to you is precise, accurate and up to the minute.

Be updated with the latest changes to salary sacrificing, or the changes effecting the 50% investment allowance, and the current rulings for your superannuation and government co-contributions.

Call us today
124 Thompson Street
Hamilton Vic 3300

Ph: 5551 3777

Email: enquiries@struckaccounting.com.au

SJF1122839

G. HILL CONTRACTING

AGRICULTURAL SOLUTIONS

3 X 3 & 4 X 3 Square Baling. Disc & Mouldboard Ploughing.

Power Harrowing. V & Rotary Raking.

Self Propelled Mower. Conditioner & Windrower.

Silage Wrapping. Hay Cartage & Stacking.

Harvesting. Rotary Hoeing. Crop Rolling.

General Cultivation. Air Seeding of Cereals.

Direct Sowing of Small Seeds. Grouper Available.

Hay, Straw & grain Sales.

Phone George: 0427 053 488

Gary: 0427 761 302

MAC NEWS ADVERTISING RATES

Articles & Ads can be left at the Post Office, or email to: macnews@mada.org.au or phone 55761228.

Payment; cheque should be made to: MADA Inc and is payable at the time of advertising. Tax Invoice & Receipt will be issued.

MADA Inc P.O. Box 52, Macarthur. 3286

Per Ad

Per Year (12 Issues)

- 1/8 page \$10 \$60
- 1/4 page \$20 \$100
- 1/2 page \$35 \$135
- Full A4 page \$50
- Full back page \$60
- Classifieds \$5.00
- Front page \$85 (restricted to half page max as available)

SAM CAMERON PLUMBING

Licence No: 46663

35 ARDONACHIE STREET, MACARTHUR

PHONE: 0419634972 HOME: 55 761 075

FOR ALL YOUR PLUMBING NEEDS FROM:

- ✓ ROOFING & GUTTERING
- ✓ SANITARY & DRAINAGE
- ✓ GAS FITTING & MAINTENANCE
- ✓ HOT & COLD WATER INSTALLATION
- ✓ BATHROOM/KITCHEN ALTERATIONS

AS WELL AS RURAL PLUMBING

REASONABLE RATES - NO JOB TOO SMALL



Podiatrist Tracy Smith

is now taking appointments at Macarthur Community Health Service . 5552 2000

Cash, credit card, Veterans gold card, health insurance rebates and medicare (with gp referral) accepted.

End Foot and Leg pain now!



August 2011

Mon	Tue	Wed	Thu	Fri	Sat	Sun
1	2	3 Senior Citizens Lunch MADA meeting 7 PM	4 Men's Shed 10-12 Noon	5	6 H'dale Macarthur V Moyston Willaura	7
8	9 RSL MEETING 2PM	10 Senior Citizens Lunch Cards, Bowls	11 Men's Shed 10-12 Noon	12	13 W'doo Mortlake V H'dale Macarthur	14 MACARTHUR HISTORICAL DAY
15	16	17 Senior Citizens Lunch Cards, Bowls	18 Men's Shed 10-12 Noon	19	20 H'dale Macarthur V Glen. Dunkeld	21
22	23	24 Senior Citizens Lunch Cards, Bowls	25 Men's Shed 10-12 Noon	26	27 Qualifying Final	28 Elimination Final
29	30	31 Senior Citizens Lunch Cards, Bowls				